

10/16/97

K. McCreath

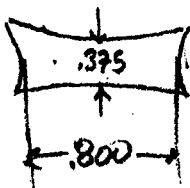
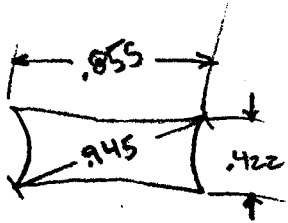
RDN tooling

Mat'l - S.S.

1.750 OUTSIDE PIN CIRCLE
1.373 INSIDE PIN CIRCLE
.1875 pin hole dia

$1.750 - .1875 = 1.5625$ pin circle

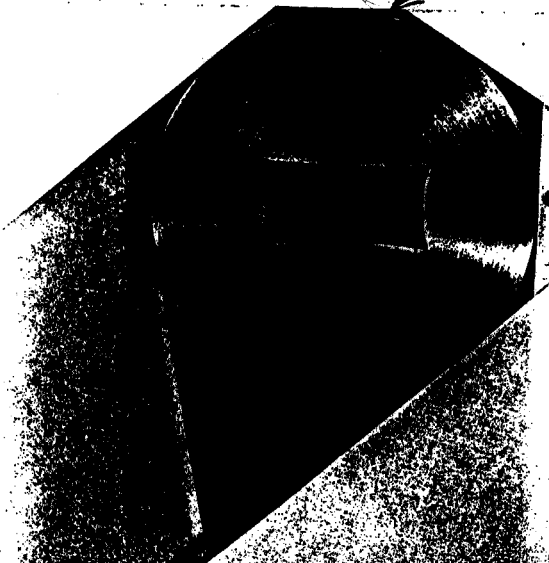
exit dim

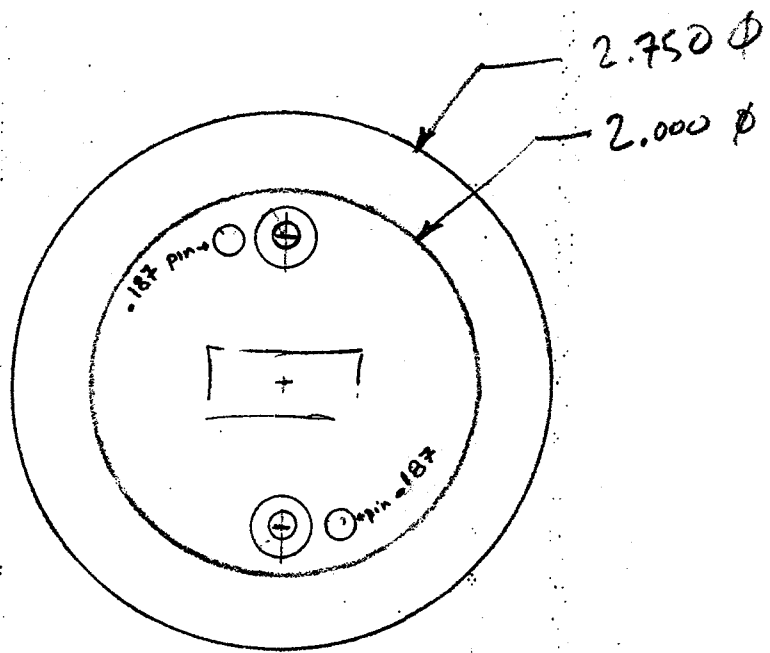


countersunk 10/32 socket head cap screw
on 1 1/2" circle

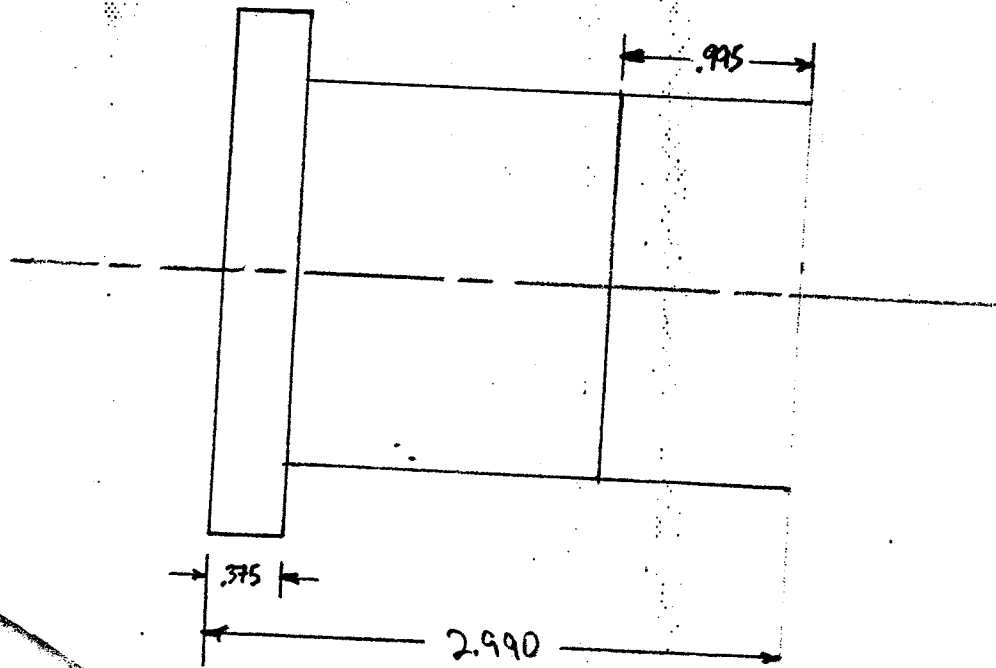
pin locations adjacent appear to
be on a larger circle ≈ 1.5625

1/8 NPT on TC $\approx .425$ deep

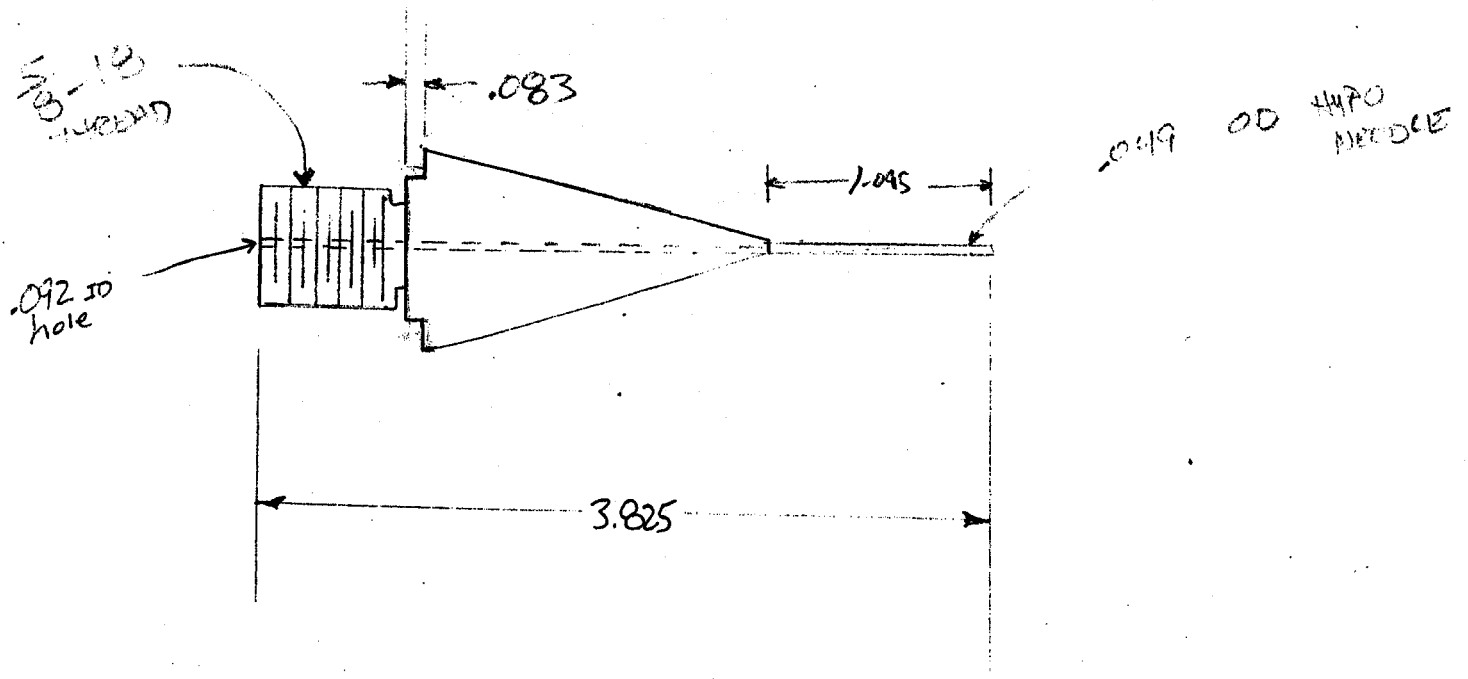


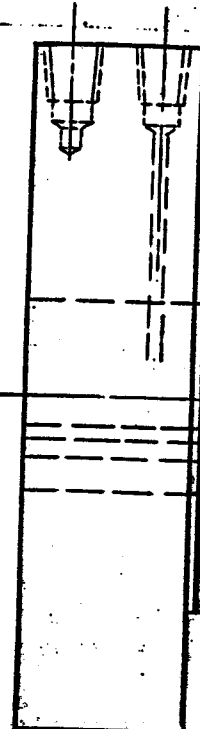
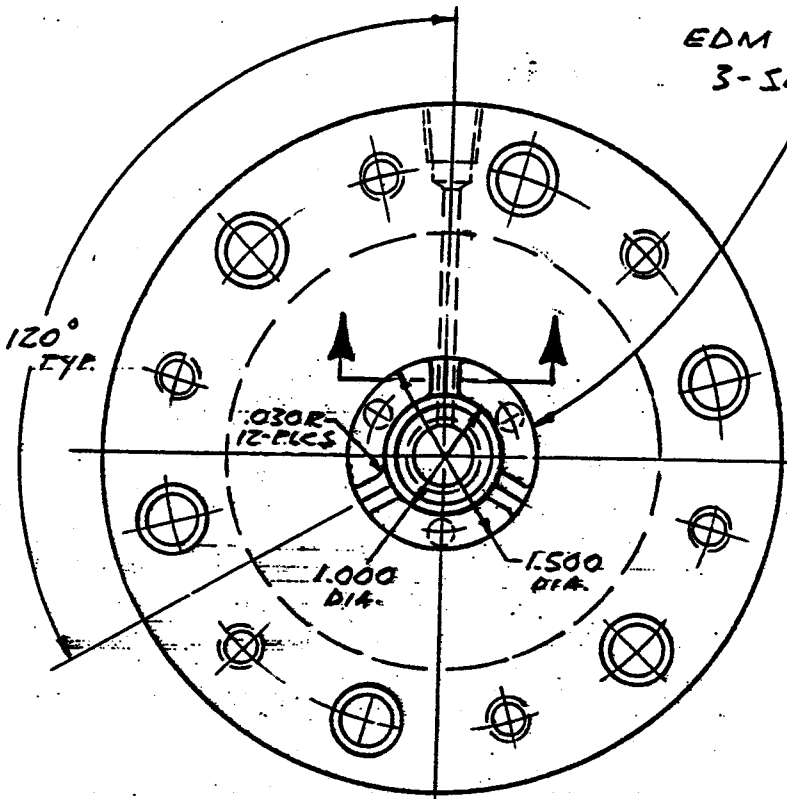


2 - SHCS on 1.5" circle w/center bore



10/16/97
K. Mellett
RDN Tooling
Mat'l - SS

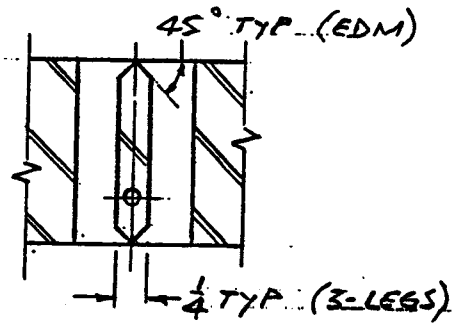




REF
SPIDER (MACHINING)
DWG C9076

OBSOLETE
SEE DWG. NO# B9230

PURCHASE DWG - EDM OPERATION



FILE # 5

RDN MFG.CO., INC. (312) 595-4876

SCALE: FULL	APPROVED BY:	DRAWN BY: ACOIX
DATE: 03-14-91		REVISED

SPIDER (EDM BURN OPERATION)

MODEL I-S TUBING HEAD	DRAWING NUMBER B9082
-----------------------	-------------------------